



# Emergency Planning Presentation to Community Forums

Michael Rowland  
Chichester District Council  
Emergency Planning Officer

## Introduction

- How Chichester DC works with other responders
- What role can Parish Councils play
- Community Emergency Plans
- The 'What If?' campaign
- Household Emergency Plans

## How Chichester DC fits in with other responders in a emergency

**Sussex Emergency Response and Recovery (Policy & Procedure) document (Sussex Resilience Forum).**

*The Aim of this document is to provide a framework for co-ordinated emergency management within Sussex.*

The level, strategy and tactics of a response will depend on the nature of the incident.

In the first instance the lead responder is most often the police, but can be could be another Category 1 responder if appropriate and may change as the situation develops. E.g. From response to recovery.

How Chichester DC fits in with other responders in a emergency continued

All responders will be working together to:

- Save and protect human life and alleviate suffering associated with the incident, at the scene and elsewhere.
- Contain the Emergency, limiting its escalation and spread.
- Safeguard the environment.
- Protect property.

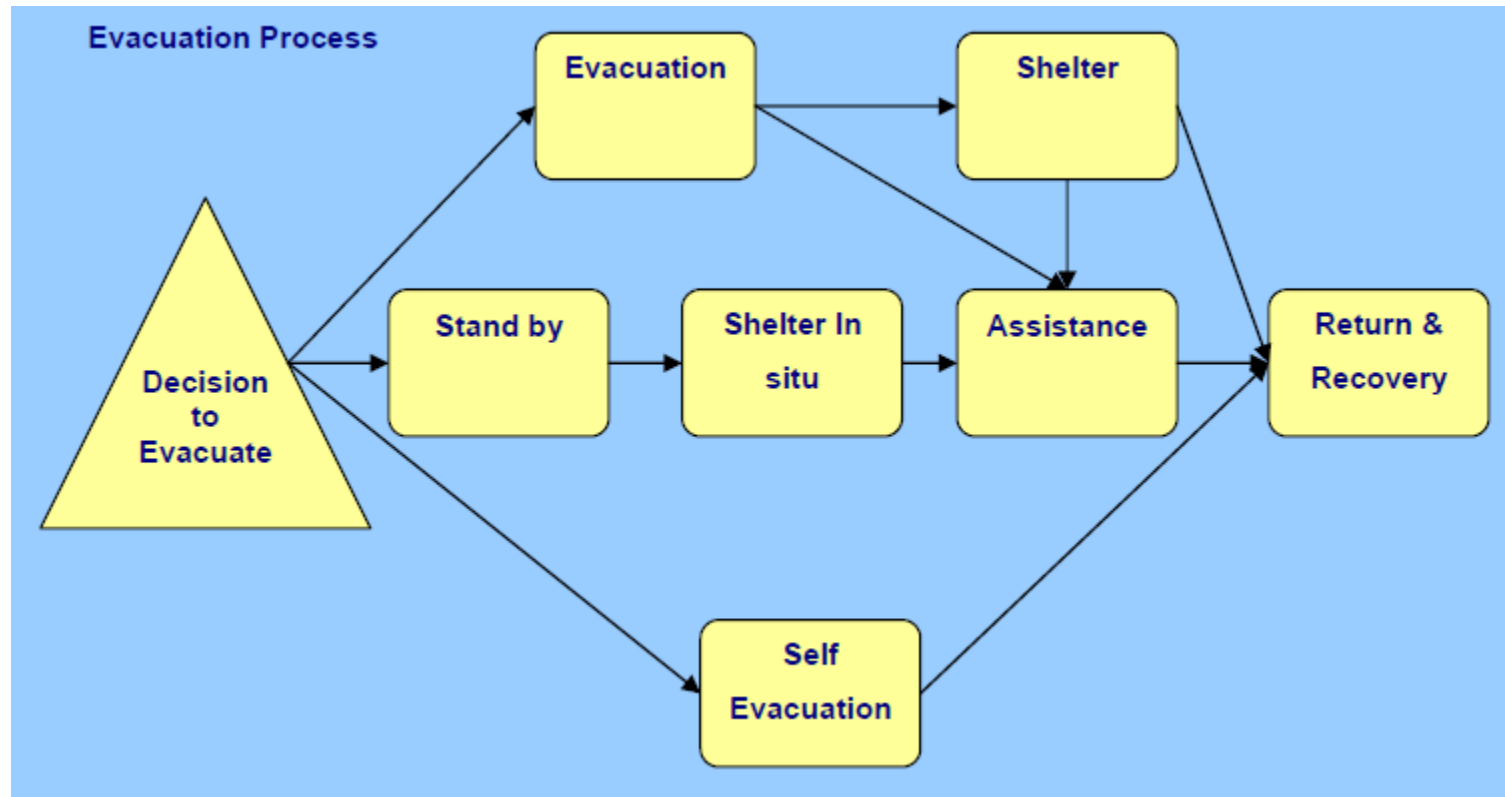
How Chichester DC fits in with other responders in a emergency continued

**The District Council will in particular:**

Work with partners, including voluntary organisations (e.g. British Red Cross) to:

- *Provide immediate shelter and welfare for survivors not requiring medical support and their families and friends via Rest Centres to meet their immediate short-term needs. Support will also be given to the Police in the operation of Survivor Reception Centres and Family and Friends Reception Centres.*
- *Respond to local marine pollution incidents.*
- *Remove Waste*
- *Provide technical and engineering advice and building control services (E.g. dangerous structures)*
- *Environmental health advice and services*

## Evacuation process



How Chichester DC fits in with other responders in a emergency continued

Following the initial response the DC will:

Lead the Recovery effort, which may carry on for a considerable time and is likely to involve many organisations that are not ordinarily involved emergency response.

What role can Parish Councils play?

Community Resilience Plan

Local knowledge



## Community Resilience Plan

Contents

Introduction

Aim

Objectives

Activation Procedure

Community Team

Key Information

Plan Maintenance

Activation Procedure / Log Sheet

Key Contacts

Risk Assessments

Community Capacity & Resources

Family Emergency Plan

Communications

Critical Infrastructure & Maps

Plan Distribution

Draft Community Resilience Emergency Meeting Agenda

Restricted Contact list

Vulnerable people list (Restricted/Protect)



**SUSSEX RESILIENCE FORUM**

Sussex Community Resilience Partnership (SCRIP)

**“WHAT IF? ”**

# Sussex Community Resilience Partnership's WHAT IF? campaign

*Its aim is: To support the local community responders to help them stay safe, while providing community resilience to assist their local communities in preparing and responding to emergencies.*



# SUSSEX RESILIENCE FORUM

Sussex Community Resilience Partnership (SCRP)

**“WHAT IF? ”**

Training:

Introduction package

Basic first aid

Working close to water

Working on the highway

Providing safety and shelter

Coordination and Control

Basic Safety Equipment



# Family Emergency Plan

Emergencies can affect the County with little or no notice. Being prepared can help reduce the effects on your family's lives, reduce the need for support from others and enable you to support the vulnerable in your community.

Disruption to essential services such as water and electricity, to regional and national travel and telecommunications are all ways an emergency can affect our everyday lives.

A graphic with a light blue background. At the top, the word "Crisis" is written in red. Below it, a green sign with the word "Resilience" in white is tilted. At the bottom, the words "No Warning" are written in red. The graphic is surrounded by four images: a firefighter holding a baby, a damaged house, a fire at night, and people wading through floodwaters. At the bottom, there are two radio icons flanking the text "A crisis happens when we least expect it!" and "GO IN, STAY IN, TUNE IN...". The website address "www.sussexemergency.info" is at the very bottom.

**Crisis**

**Resilience**

**No Warning**

A crisis happens when we least expect it!

**GO IN, STAY IN, TUNE IN...**

[www.sussexemergency.info](http://www.sussexemergency.info)



Further information

[mrowland@chichester.gov.uk](mailto:mrowland@chichester.gov.uk)