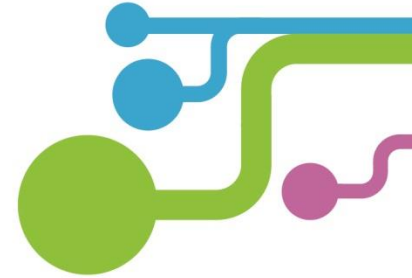


Bringing better, faster broadband to West Sussex



Broadband Update

Lavant Valley Partnership 25.07.15

Kevin Carter, Executive officer



www.westsussex.gov.uk/broadband

Project Aims

We aim for the majority of residents and businesses to be able to access superfast fibre-based broadband speeds of 24Mbps by spring 2016.

Building on the current commercial roll out of broadband technology:

- more than 90% of properties in West Sussex will have access to fibre-based broadband infrastructure
- all properties in the areas which are eligible for funding through the project should be able to access basic broadband speeds of a minimum of 2Mbps.

£20m project funding

Aligned to West Sussex Economic Strategy, to underpin economic growth (retain & grow businesses in West Sussex) and to help social inclusion (residents access public services, work, and entertainment more easily)

- £6.26m of funding has been allocated by WSCC
- £6.26m funding from central government

The project uses a 'gap-funding' model. BT contribution more than £7m.

Aim to achieve the best possible coverage of broadband for the county in the most cost effective way



www.westsussex.gov.uk/broadband

'Superfast Extension Programme'

Government has set a new target for 95% coverage of 'superfast' broadband by December 2017.

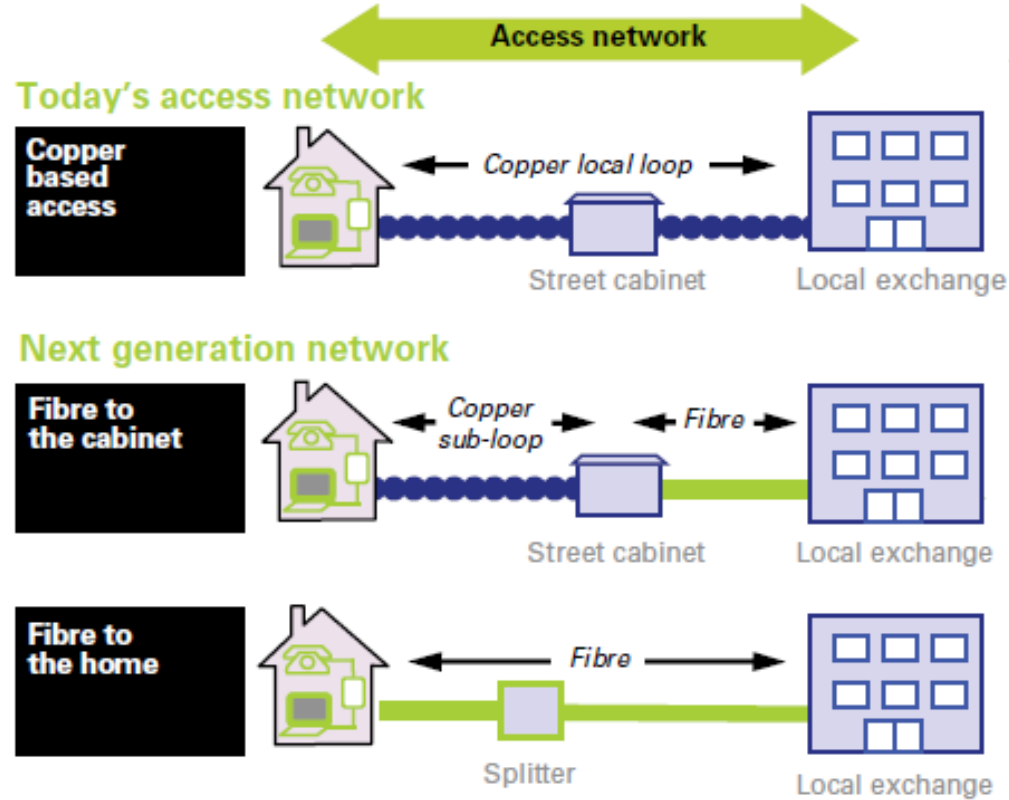
Sometimes referred to as 'phase two'

- All properties in postcodes which remain without access to 'superfast' broadband after spring 2016 remain eligible for funding for a 'superfast' solution
- Engineering costs will be higher as the network will be built in areas where the density of premises is lower
- Need to ensure we achieve new national target of 95% 'superfast' broadband coverage by the end of 2017 in a cost effective way.

Technology

- A mix of Fibre to the Cabinet (FTTC) and Fibre to the Premises (FTTP)
- FTTC
 - Siting a new cabinet (DSLAM) next to/near to the existing cabinet
 - power required
 - may require new ducting
 - New cabinets will also be needed where previously copper lines have run from the exchange directly to a building.
- FTTP
 - No cabinets, fibre direct from the exchange
 - Use of existing ducting or laying of new ducting
 - Could use existing or new telegraph poles to go overhead.

'West Sussex Better Connected' Technology



'West Sussex Better Connected' Technology



Timeline

- 15 May 2013 – Contracted with BT Group to deliver the new broadband infrastructure
- Summer 2013 – Detailed implementation planning with BT
- Autumn/Winter 2013/14 – Detailed surveys start, prior planning notifications submitted
- May 2014 onwards – first services ‘go live’
- Three year roll-out to March 2016 through eight overlapping phases
- More than 300 new cabinets across the county, 18 exchanges upgraded

Progress to date

- Surveys now all completed for phases 1 – 5, barring a handful of cabinets which have been deferred.
- Over 38,000 more homes and businesses can now access better, faster broadband.
- 235 cabinets and five FTTP sites all ready for service, majority now 'live'.
- 173km out of a total of 232km fibre network now built.
- 23 out of 45 cabinets already surveyed for phase six and surveys for phase seven beginning in June.
- It is our most ambitious year of build with engineers working in every district of the county...

Lavant Valley area by parish

Oving – a mixed bag. Some access to new services, remaining postcodes now eligible for funding

Tangmere – ‘superfast’ broadband from new cabinet Chichester 63

Westhampnett – ‘superfast’ broadband from new cabinet Chichester 65

Boxgrove – ‘superfast’ broadband from new Chichester 41 for majority.

Eartham – connected by three cabinets being upgraded. Not likely to see improvements in speeds. Will remain eligible for funding.

Lavant Valley area by parish

Lavant – mainly covered by CRO. 91 premises get ‘superfast’ broadband from new cabinet Chichester 46.

West Dean – currently working to upgrade Singleton exchange. Vast majority will get ‘superfast’ broadband from Singleton 2, others get FTTP off East Marden exchange.

Singleton – Singleton 1 and 2 and FTTP bring ‘superfast’ to majority. A handful of premises remain eligible for funding.

Upwaltham – whole parish remains eligible for funding as does not benefit from upgrades to three cabinets.

East Dean – ‘superfast’ for everyone as a result of upgrade to FTTP.

Communications with communities

- Briefing of MPs, County Councillors, District and Borough Leaders and Chief Execs, Parish clerks
- Postcode checker and exchange map on website
- Email correspondence through broadband inbox
- Awareness raising activity around cabinet 'go live', posters, postcards and attendance at local events
- Operational PR management
- Media handling to promote good news

Activity aims to:

- Explain what is happening and when
- Manage expectations about what, where and when
- Promote the benefits of broadband
- Signpost customers to new services

Next steps

- Engineering to be completed in the area by the end of this year
- For more details keep checking: www.westsussex-betterconnected.org.uk
- Contact your ISP once services are live to ask about a better package
- Properties remaining eligible for funding may be considered in SEP
- Waiting to see if government increases targets and funding for 100% 'superfast' coverage

A dirty job....



For more information

Use the postcode checker and exchange map at:

www.westsussex-betterconnected.org.uk

Send enquiries to:

Broadband@westsussex.gov.uk

Residents can also [sign up](#) to receive news when it is released

Openreach website for checking commercial roll-out:

www.superfast-openreach.co.uk/where-and-when/



www.westsussex.gov.uk/broadband