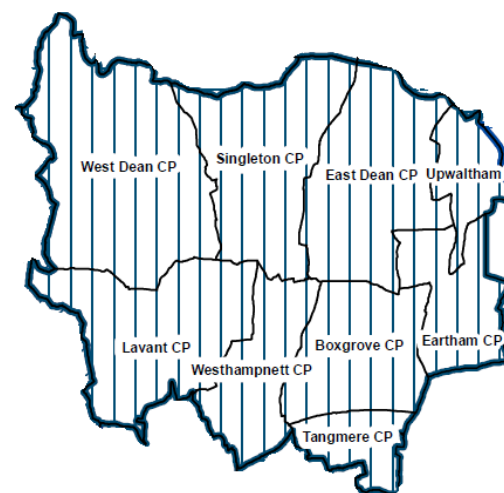


# Census 2011

## Lavant Valley Partnership Community Forum

2nd September 2014



# Census 2011

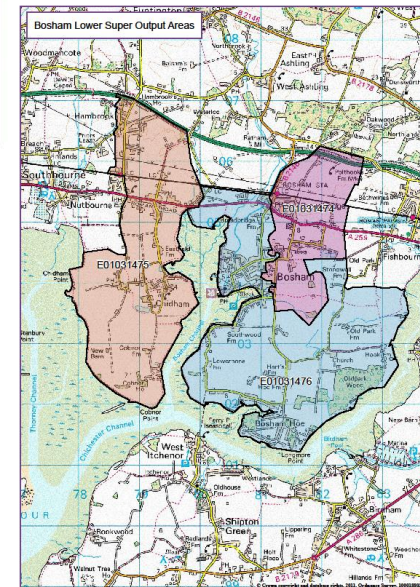
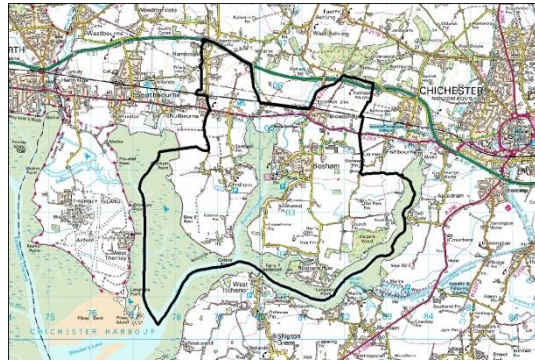


- March 27<sup>th</sup> 2011
- Same questionnaire to all households
- Data is publicly available
- Census 2021 – recent announcement (mostly online)
  
- National trends (Students, shared ownership housing and 'no religion')
- Low level parish data (Upwaltham into Eartham)
- Chichester District (Single person households, self-employed and unpaid care 1-19 hours a week)

# Levels of data



- National
- Regional
- County
- District
- Ward
- Parish
- Lower Super Output Area
- Output Area (Lowest 200-300 population)
- Maps available



# Population (Parish)



- Tangmere highest in 2001 and 2011
- Westhampnett highest increase with 249
- Lavant, Tangmere and Westhampnett  
- top 3 increases by number
- Percentage increases (top 3) in Tangmere, West Dean  
and Westhampnett

Parish	2001	2011	Number change	Percentage change
Boxgrove	901	957	56	6.22%
Eartham	129	111	-18	-13.95%
East Dean	217	206	-11	-5.07%
Lavant	1586	1656	70	4.41%
Singleton	476	480	4	0.84%
Tangmere	2462	2625	163	6.62%
West Dean	425	481	56	13.18%
Westhampnett	460	709	249	54.13%

# Households (Parish)



- Tangmere highest for 2001 and 2011
- Tangmere highest increase with 141
- Lavant, Westhampnett and Tangmere  
- top 3 increases by number
- Singleton, Tangmere and Westhampnett – top 3  
increases by percentage

Parish	2001	2011	Number change	Percentage change
Boxgrove	420	434	14	3.23%
Eartham	53	48	-5	-10.42%
East Dean	101	103	2	1.94%
Lavant	667	734	67	9.13%
Singleton	201	225	24	10.67%
Tangmere	965	1106	141	12.75%
West Dean	177	192	15	7.81%
Westhampnett	162	270	108	40.00%

# Dwellings (Parish)



- Tangmere highest in 2001 and 2011
- Tangmere highest increase with 174
- Lavant, Westhampnett and Tangmere all increase
- Lavant, Tangmere and Westhampnett  
Top 3 increases by number and percentage

Parish	2001	2011	Number change	Percentage change
Boxgrove	444	449	5	1.13%
Eartham	57	59	2	3.51%
East Dean	101	112	11	10.89%
Lavant	687	777	90	13.10%
Singleton	221	244	23	10.41%
Tangmere	982	1156	174	17.72%
West Dean	192	208	16	8.33%
Westhampnett	185	290	105	56.76%

# Single person households

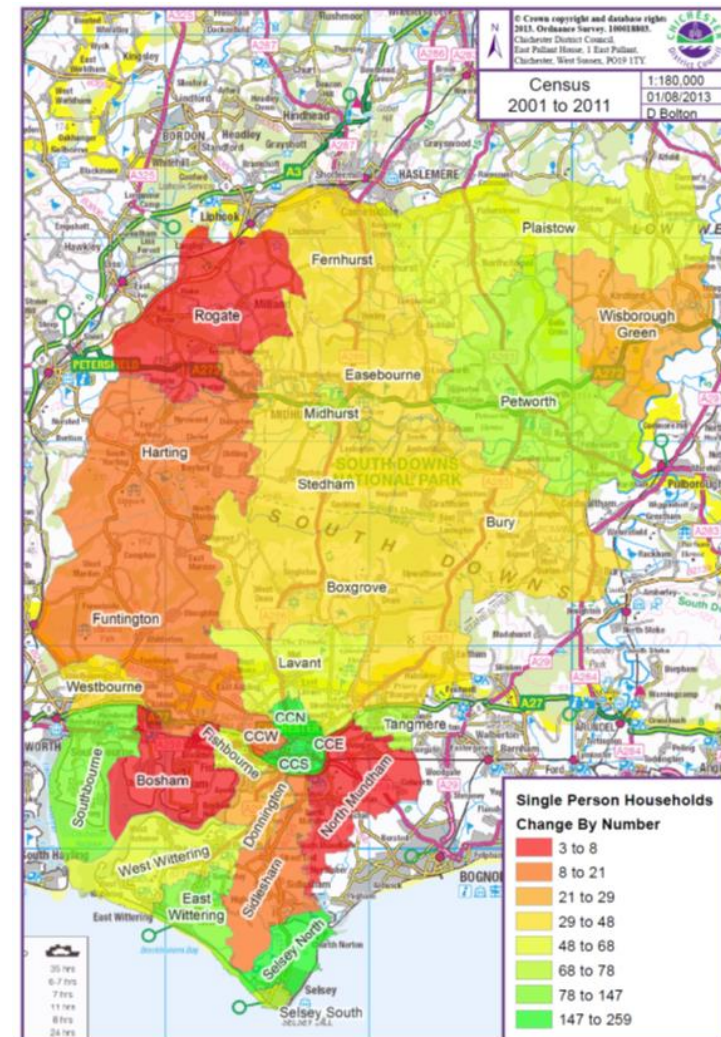


- Almost 1 in 3 (single persons)
- Top 25% in the country

## Lavant Valley Partnership:

- Boxgrove, Lavant and Tangmere high in 2011
- Highest number increase in Tangmere
- High percentage increase Westhampnett

	2001	2011	Number change	Percentage change
Boxgrove	144	145	1	0.7%
Eartham	12	13	1	8.3%
East Dean	38	40	2	5.3%
Lavant	182	204	22	12.1%
Singleton	58	81	23	39.7%
Tangmere	232	310	78	33.6%
West Dean	46	56	10	21.7%
Westhampnett	32	71	39	121.9%



# Un-paid care 1-19 hours a week

- 7.8% - highest in West Sussex
- Nearly top 10% in the Country

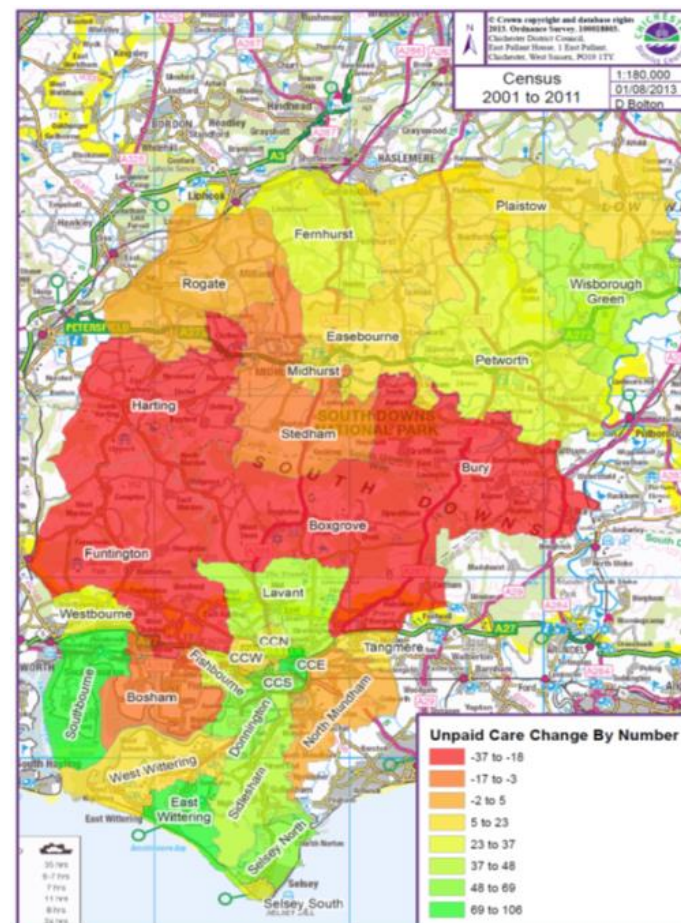
## Lavant Valley Partnership:

- Boxgrove, Lavant and Tangmere high in 2011
- Highest number increase in Westhampnett
- High percentage increase in Westhampnett

	2001	2011	Number change	Percentage change
Boxgrove	81	77	-4	-4.9%
Eartham	12	12	0	0.0%
East Dean	23	25	2	8.7%
Lavant	125	133	8	6.4%
Singleton	57	42	-15	-26.3%
Tangmere	143	159	16	11.2%
West Dean	35	28	-7	-20.0%
Westhampnett	14	54	40	285.7%

Definition:

*Family members, friends, neighbours or others long term, physical, mental ill health or disability or old age*



# Self-employed

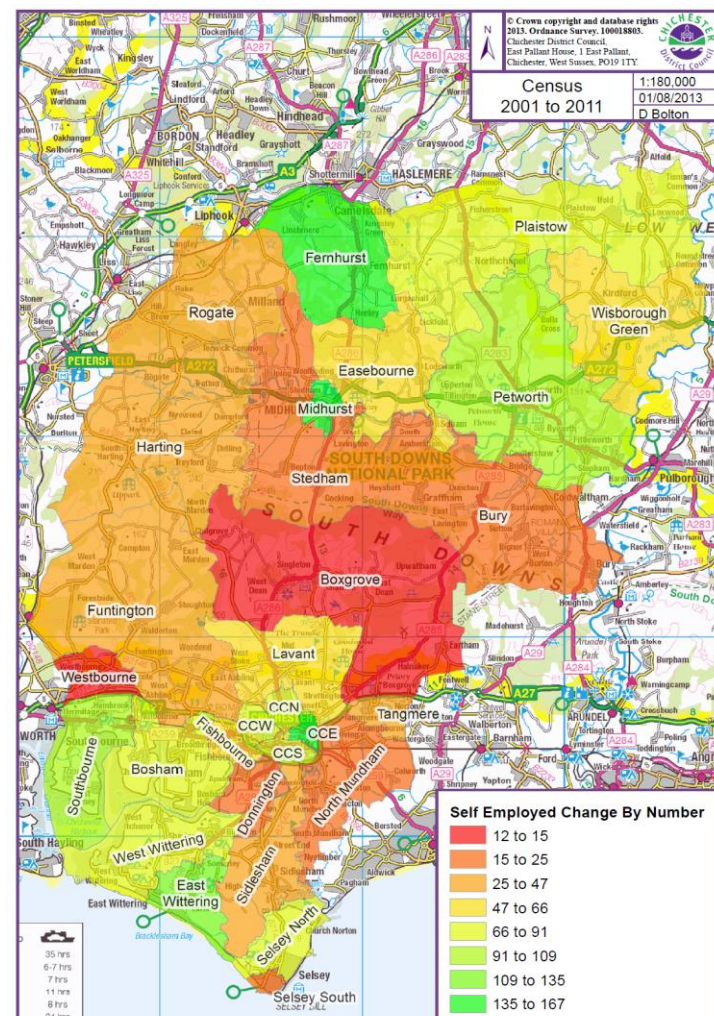


- Highest percentage in West Sussex (14.5%)
- Top 10% in the Country

## Lavant Valley Partnership:

- Boxgrove, Lavant and Tangmere high in 2011
- Tangmere highest number increase
- High percentage increase in Westhampnett

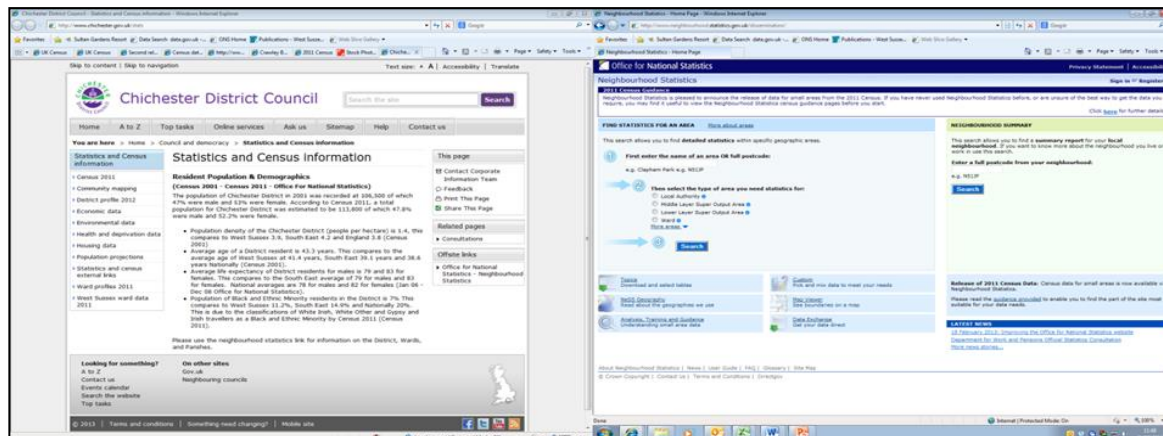
	2001	2011	Number change	Percentage change
Boxgrove	115	108	-7	-6.1%
Eartham	22	19	-3	-13.6%
East Dean	35	39	4	11.4%
Lavant	141	162	21	14.9%
Singleton	45	58	13	28.9%
Tangmere	184	226	42	22.8%
West Dean	61	69	8	13.1%
Westhampnett	46	80	34	73.9%



# Where can I access Census 2011 data?



- [www.chichester.gov.uk/stats](http://www.chichester.gov.uk/stats)
- Office for National Statistics - user friendly
- Portrait or profile of your area
- Funding applications S106
- Neighbourhood plans



# Any questions?



- **Matt Gover**
- Corporate Information Officer
- Communities team
- [mgover@chichester.gov.uk](mailto:mgover@chichester.gov.uk)
- 01243 534730