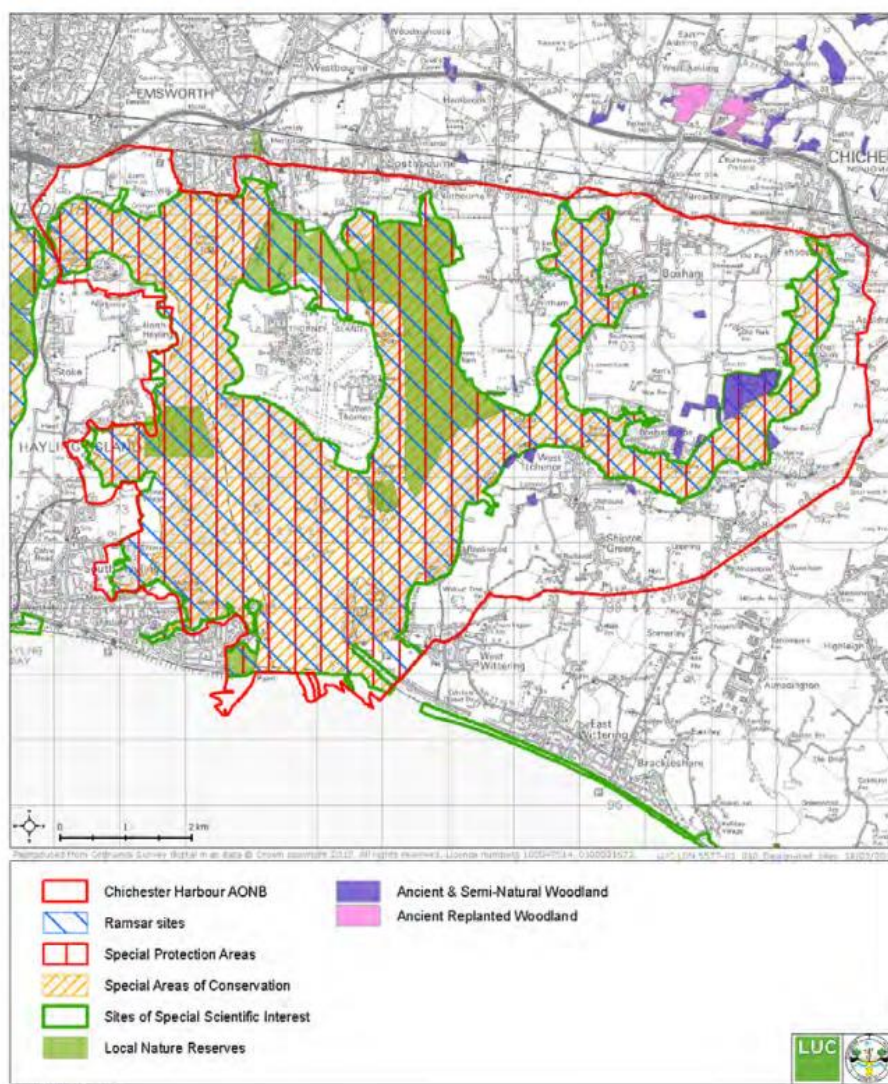


## Response to the query from the examiner regarding advice on the source of the map on Page 44 of the NP? The ecological summary of the parish?

The information on

- Designated sites, wetland sites used by waders and sites used by Brent Geese were taken from Chichester Harbour State of the AONB report March 2013;
  - Change of land use affecting the sites used by Brent Geese and Waders was taken from Bosham Village Design Statement November 2011 page 14 and site assessments;
  - Species networks within the Parish was taken from Appendix 4 in the Draft Local Plan Key Policies - Preferred Approach - July 2013; and
  - Notable Road verges was taken from Bosham Village Design Statement November 2011 page 13
- The information is summarised in the extracts below

Figure 4.1: Map of designated sites



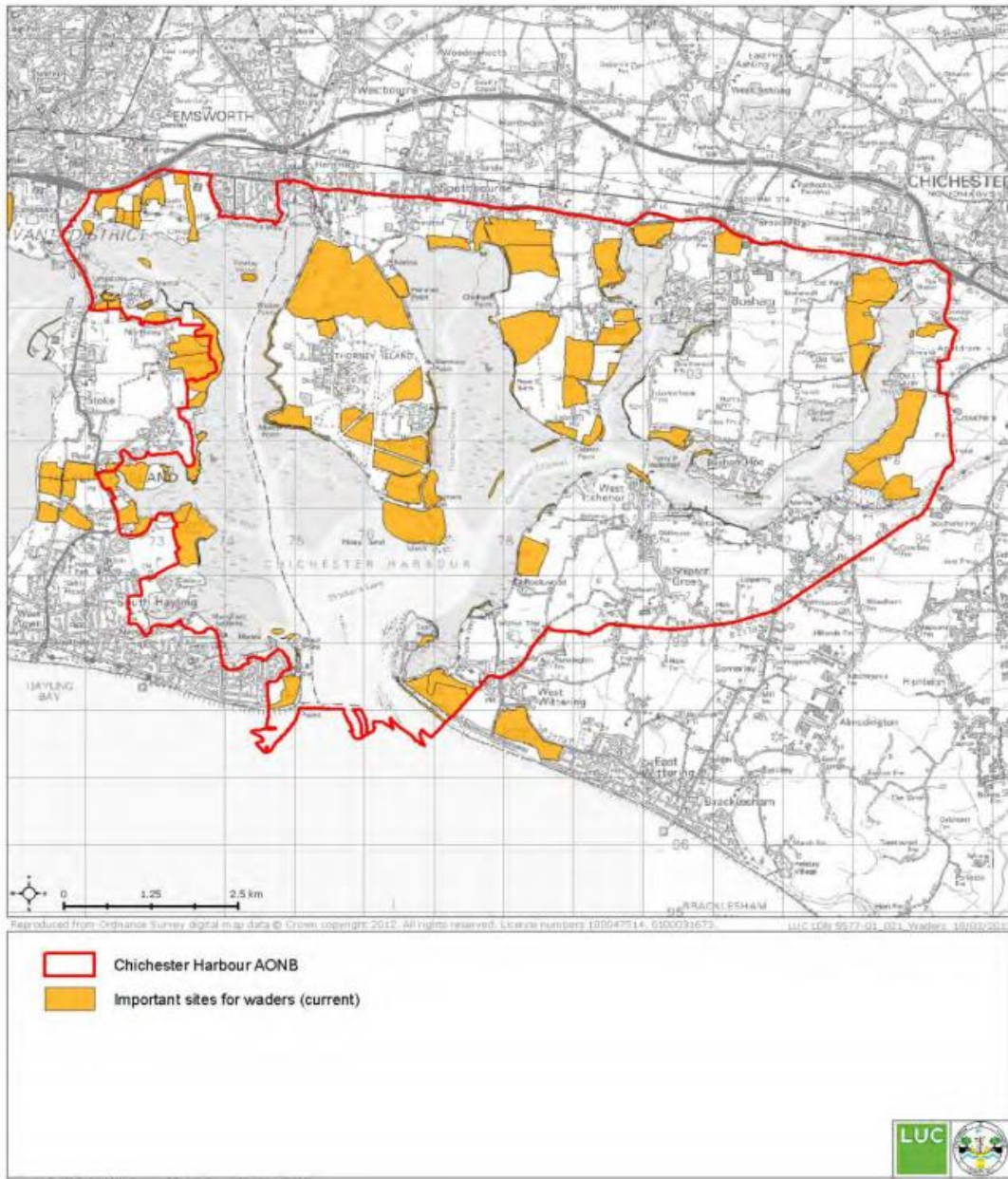
Source: Natural England (downloaded 2012)

Condition of SSSIs

4.4 Figure 4.2 provides a spatial representation of SSSI condition – showing that 79% is in 'unfavourable

Extract from Chichester Harbour State of the AONB report

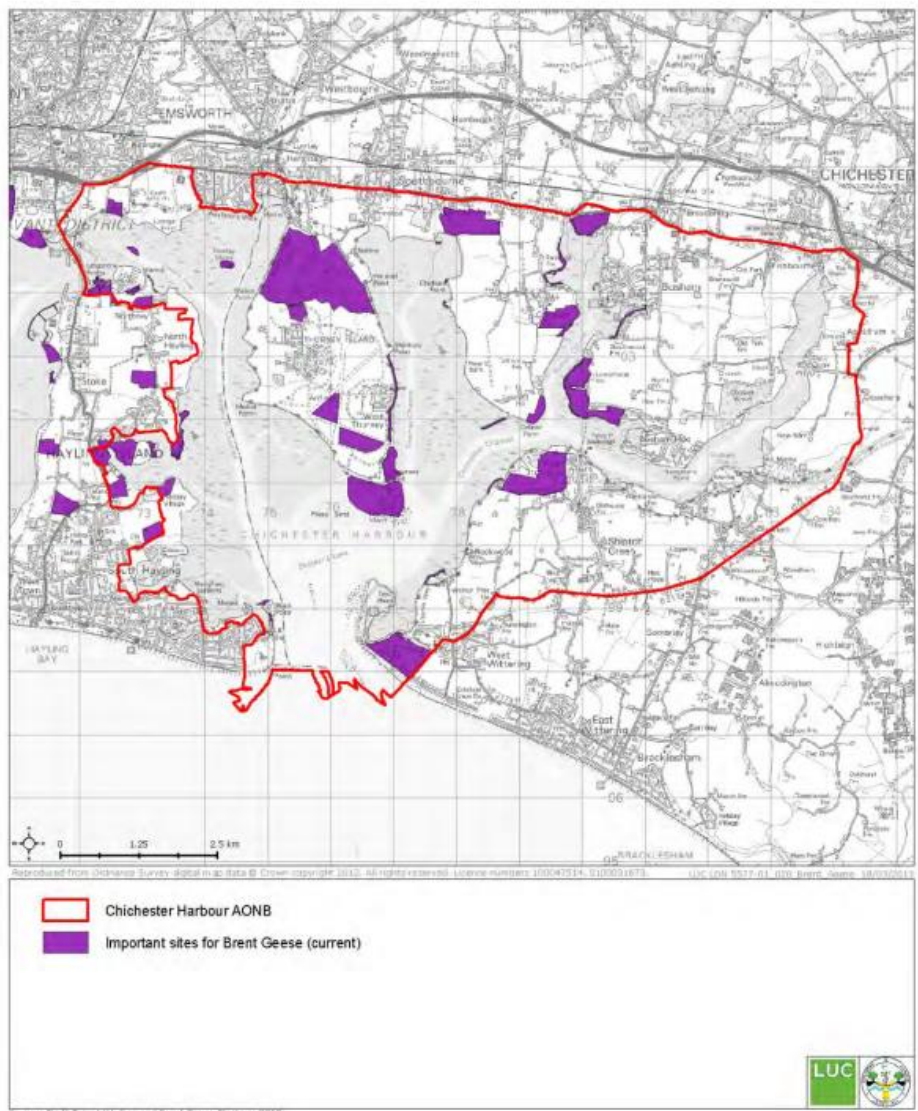
Figure 4.4: Current wetland sites used by waders in the AONB



Source: Draft Solent and Brent Goose Strategy, Hampshire & Isle of Wight Wildlife Trust (2010)

Extract from Chichester Harbour State of the AONB report

**Figure 4.5: Current sites used by Brent Geese in the AONB**



Source: Draft Solent and Brent Goose Strategy, Hampshire & Isle of Wight Wildlife Trust (2010)

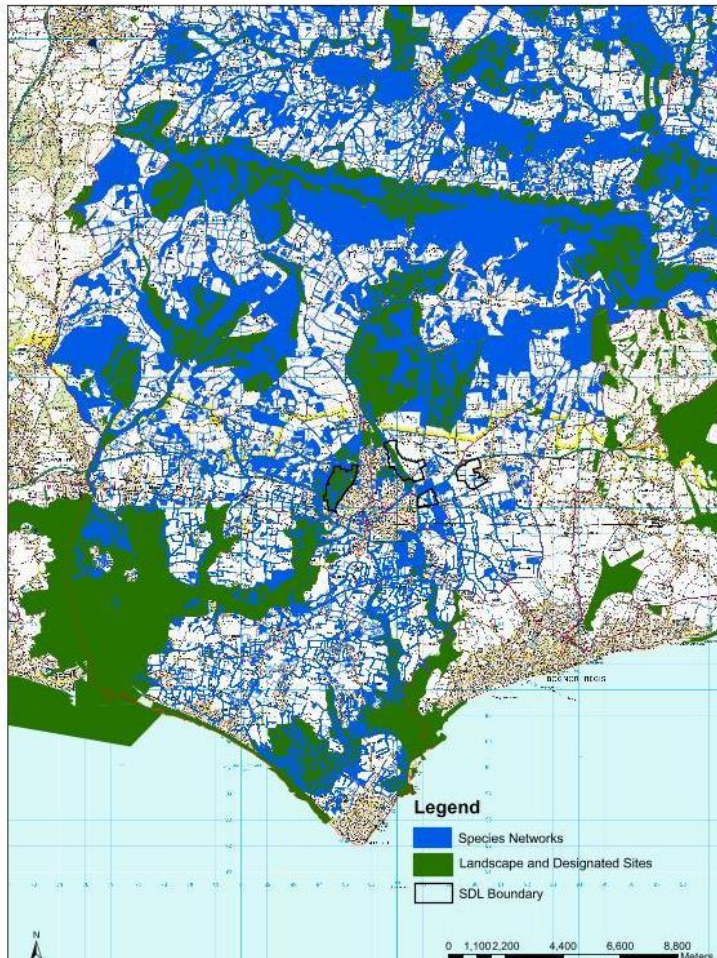
**Extract from Chichester Harbour State of the AONB report**

*The Solent Wader-roost and Brent Goose Strategy 2010 (SW&BGS) and the Chichester Harbour Conservancy's Goose Watch scheme has recorded the use of inland fields by Brent Geese and areas used as Wader roosts, furthermore the SW&BGS categorised areas into important, uncertain (where there were insufficient records) and no recorded use. The maps indicate fields and roosts where use was recorded during the period 2005-2010; however, additional fields have been used in the past. The annual use of fields by Brent Geese is highly dependent on the Brent Goose population size, crop type and availability of fields; daily use will take in a further raft of factors (weather, disturbance etc). Change of land use of these areas would preclude against the site being used in the future. Sites that have been used in the past, probably when a combination of factors have made it suitable, will probably be used in the future when that combination of factors occur again.*

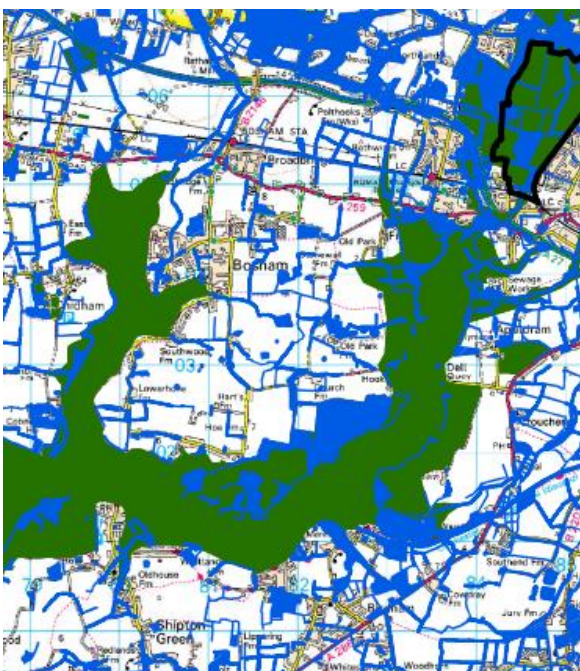
**Extract from Bosham Village Design Statement November 2011 page 14**

Map i.1 Chichester District ecological corridor (Popup full image)

### Chichester District Green Infrastructure



Extract from Draft Local Plan Key Policies - Preferred Approach - July 2013



Enlarged extract covering the Parish

*Bosham also includes a locally designated Notable Road Verge (NRV) on Smugglers Lane, designated for its flora, and in particular the presence of Green Winged Orchids.*

**Extract from Bosham Village Design Statement November 2011 page 13**