



**KIRDFORD**

**NEIGHBOURHOOD DEVELOPMENT PLAN**

**Information Statement**

**Referendum: 1<sup>st</sup> May 2014**

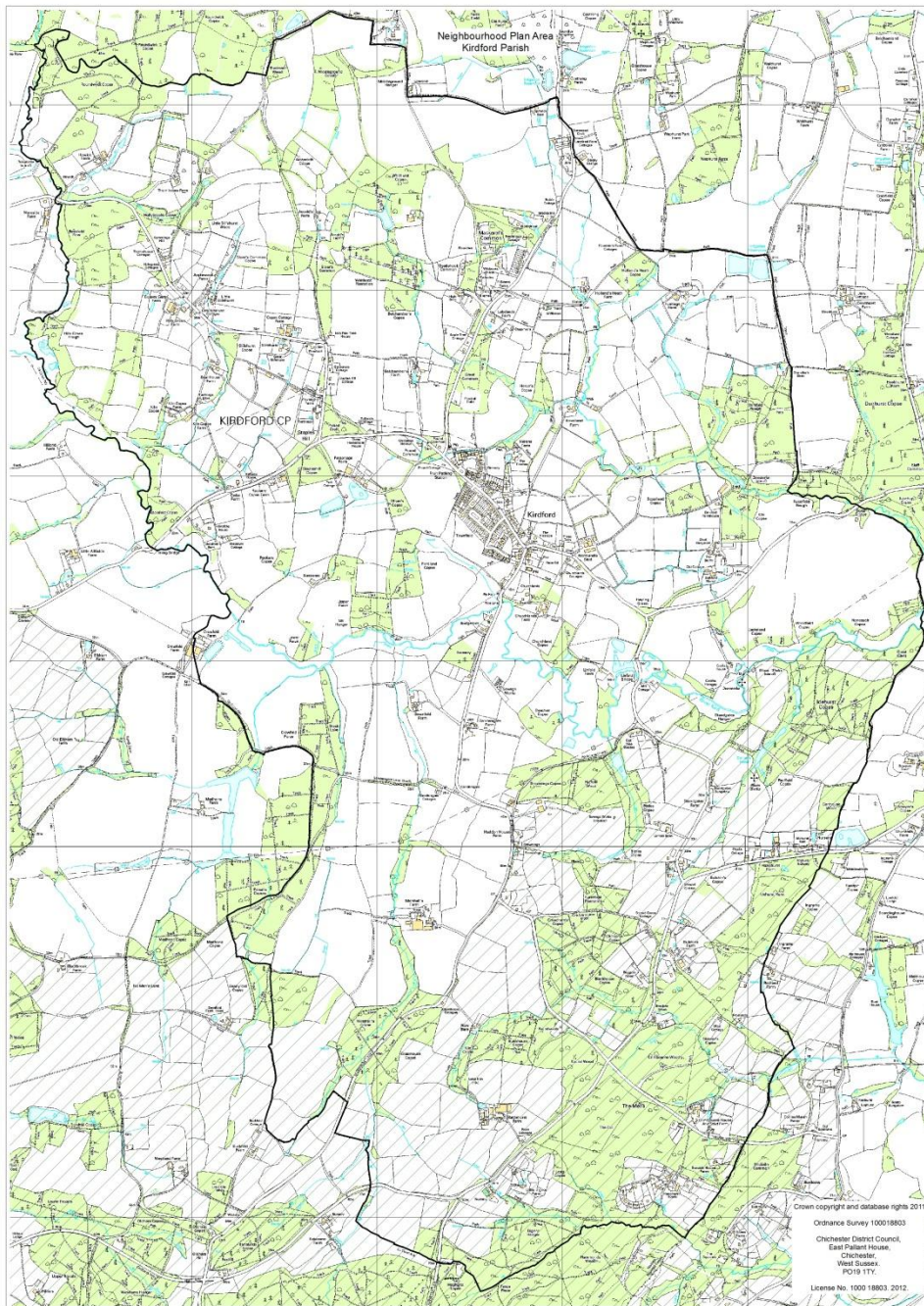


## Information Statement

A neighbourhood planning referendum will be held for the Kirdford Neighbourhood Development Plan 2014 – 2029 on 1<sup>st</sup> of May. The question asked in the referendum will be:

*'Do you want Chichester District Council and the South Downs National Park Authority to use the neighbourhood plan for Kirdford to help it decide planning applications in the neighbourhood area?'*

The referendum area and the area covered by the neighbourhood plan is the parish of Kirdford (see map)



A person is entitled to vote in the Referendum if on the 1<sup>st</sup> of May 2014

- He or she is entitled to vote in a local government election in the referendum area; and
- His or her qualifying address for the election is in the referendum area. A persons qualifying address is in relation to a person registered in the register of electors, the address in respect of which he or she is entitled to be registered.

The Referendum expenses limit that will apply in relation to the Referendum is £2409.79 The number of persons entitled to vote in the Referendum by reference to which the limit has been calculated is 810

The Referendum will be conducted in accordance with procedures which are similar to those used at local government elections.

The specified documents are the:

- Draft Kirdford Neighbourhood Development Plan
- Report of the independent examiner
- Summary of the representations submitted to the independent examiner
- Statement by the local planning authority that the draft plan meets the basic conditions (Decision Statement)
- Statement that sets out general information as to town and country planning including neighbourhood planning and the referendum (information for voters)

These documents can be viewed at.

East Pallant House, 1 East Pallant, Chichester, West Sussex, PO19 1TY.

Kirdford Village Stores, Russett Place, Kirdford, RH14 0QQ

South Downs National Park Authority, Rosemary's Parlour, North Street, Midhurst, GU29 9SB

Or online at: <http://www.chichester.gov.uk/index.cfm?articleid=22280>